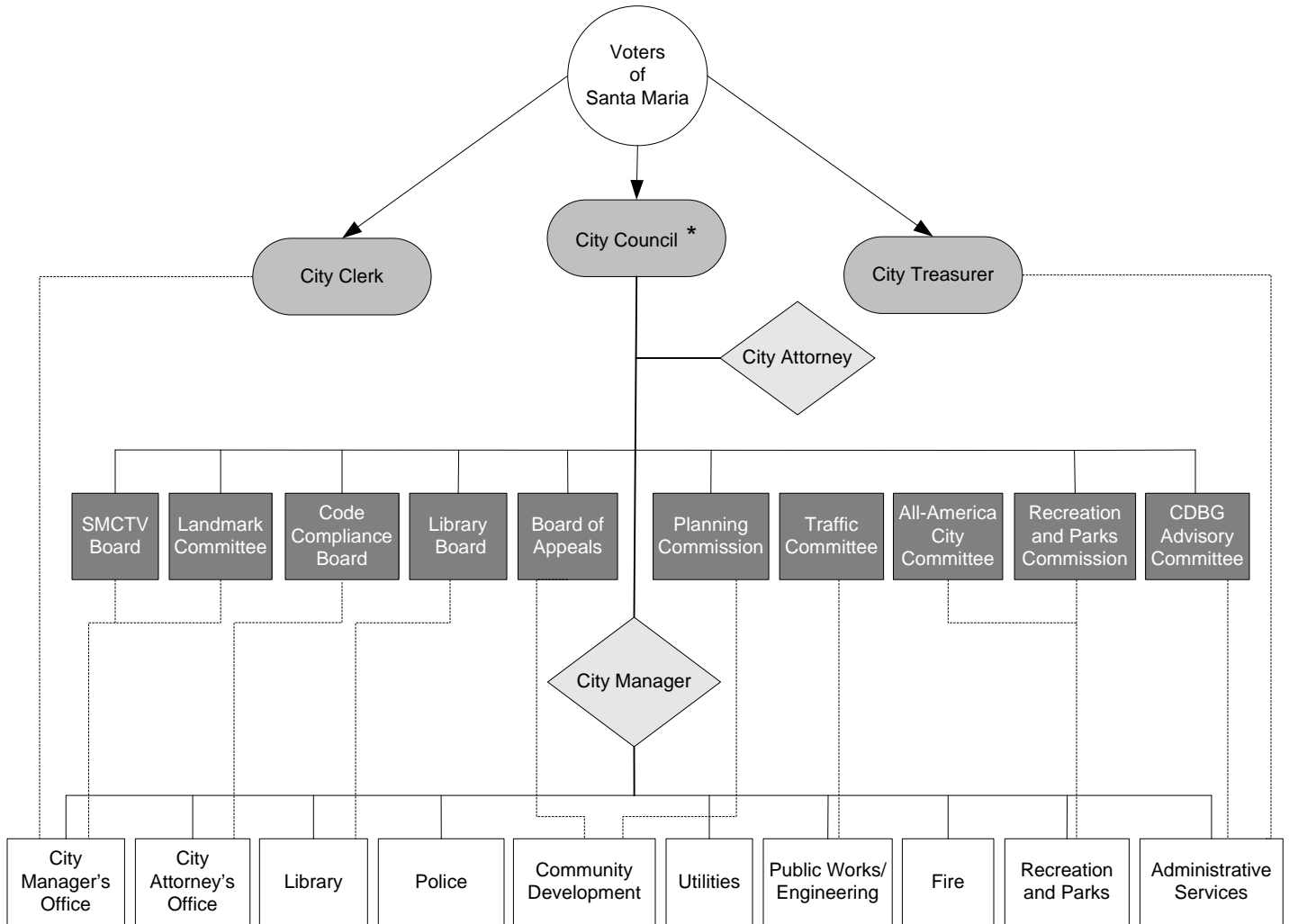


ORGANIZATIONAL CHART



- City Manager's Office:** Administration, Human Resources, Records, Elections, Risk Management, PEG Television
- City Attorney:** Legal, Code Compliance
- Library:** Santa Maria, Cuyama, Guadalupe, Orcutt
- Public Works:** Engineering, Streets & Facilities, Transit, Fleet
- Community Development:** Planning, Building Inspection
- Utilities:** Water, Solid Waste, Wastewater
- Police:** Operations, Support
- Fire:** Prevention, Suppression, All-Risk Emergency Services
- Recreation and Parks:** Recreation, Parks (Maintenance, Landscape Maintenance, Graffiti Eradication, Town Center Mall Maintenance)
- Administrative Services:** Finance, Utility Billing, Special Projects, Information Technology

Legend

