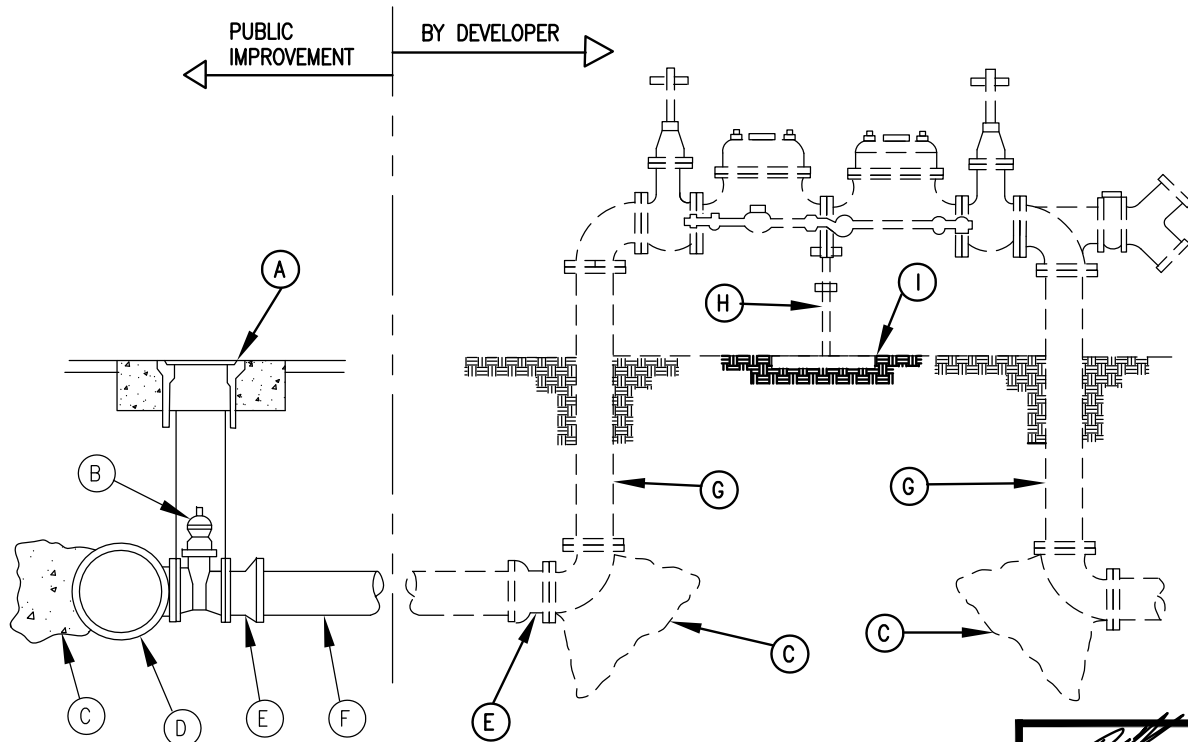


PLAN



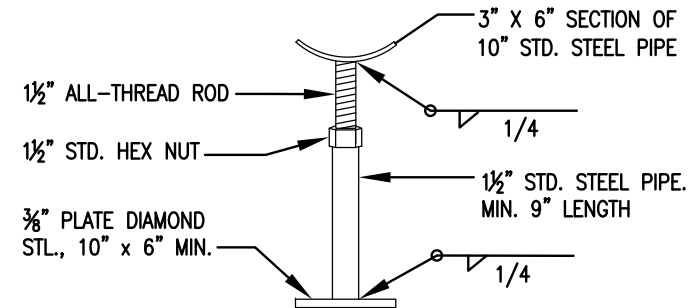
SECTION "A"-"A"

GENERAL NOTES

1. All backflow-prevention assemblies shall be in accordance with section 7601 of Title 17 of the California Code of Regulations.
2. Developer shall install an approved double check detector check (DCDA) assembly or reduced pressure principle (RP) assembly. A list of approved backflow-prevention assemblies can be obtained from the City of Santa Maria Utilities Department. △ B △ C
3. Backflow-prevention assemblies shall be installed above ground with 12 to 24 inches clearance unless otherwise approved by the City Engineer.
4. Assembly must be accessible for testing, maintenance and meter reading.
5. Meter shall be brass construction throughout and shall read in cubic feet.

LEGEND

- A) Valve Box & Riser per City Std. Drwg..
- B) FE X MJ Resilient-Seated Gate Valve.
- C) Thrust Block per City Std. Drwg..
- D) FE X FE Tee.
- E) PVC Adaptor (F & CF)
- F) PVC Pipe.
- G) Spools shall be ductile iron and have threaded flanges.
- H) Adjustable support per detail, this sheet. All exposed metal shall be galvanized.
- I) 18"x12"x4" Concrete Bearing Pad.



ADJUSTABLE SUPPORT

		City of Santa Maria Standard Drawing
RICHARD G. SWEET R.C.E. 44,213 EXP. 6/30/07 DATE 1/20/05		DESCRIPTION: △ C △ B BACKFLOW PREVENTION ASSEMBLIES 2", 3", 4", 6", 8" & 10"
REVISIONS A REVISION INDICATED B UTILITY DEPT. REVISIONS C UTILITY DEPT. REVISIONS	BY APP DATE JH 9/13/07 CjP 6/17/08 CjP 2/01/11	STANDARD NUMBER WA-27C
DRAWN BY: M.K.	DATE DRAWN: 10/92	SCALE: NONE SHEET 1 OF 1